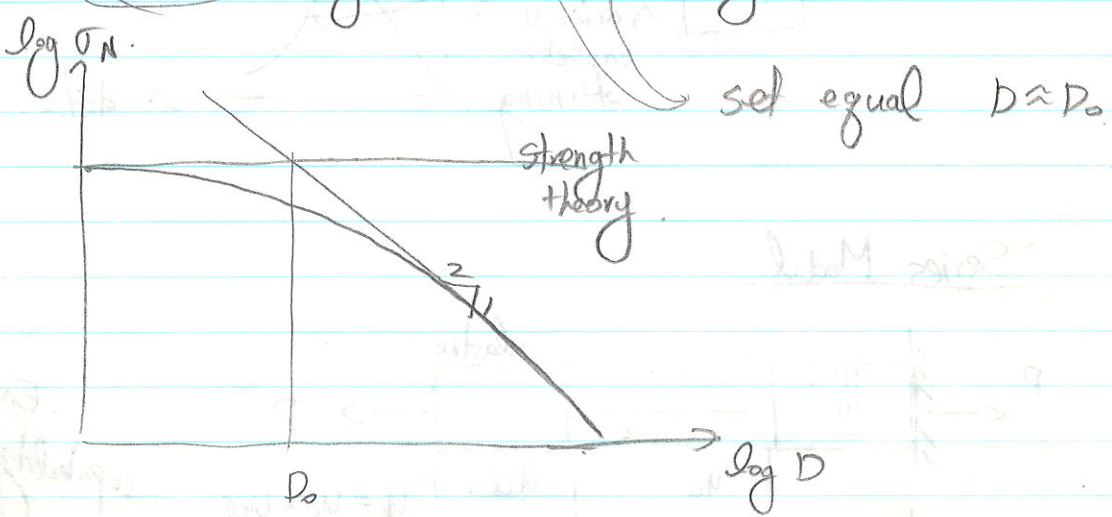


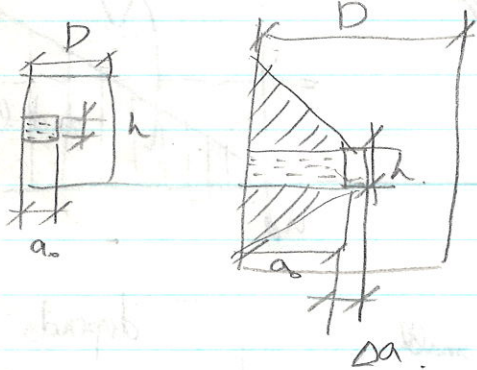
- 1) $D \ll D_0$ $\sigma_N \approx B \sigma'_t = \text{constant}$
- 2) $D \gg D_0$ $\sigma_N \approx B \sigma'_t \sqrt{D_0} \frac{1}{\sqrt{D}}$ ← exact for LEFM

(LEFM) $D \gg D_0$ $\log \sigma_N = \text{Const} + \frac{1}{2} \log D$

process zone is small, compare to the structure size



Same result if $\frac{a_0}{D} = \text{const}$.

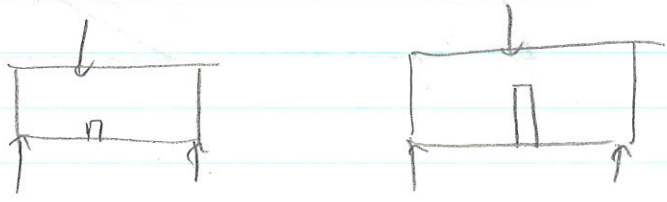


2) $h = \text{constant}$ (crack propagating)

Home work ①

$$\frac{\sigma^2}{2E}$$

Also possible.



Same result